



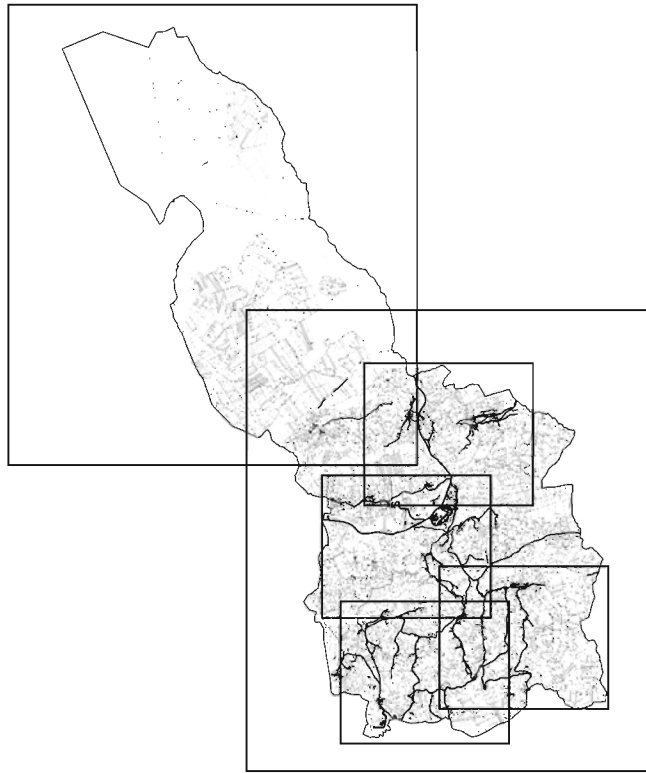
COMUNE DI CASTELNOVO DEL FRIULI

VARIANTE DI REVISIONE DEI VINCOLI E MODIFICHE PUNTALI
VARIANTE AL PRGC N° 6

P5

AREE EDIFICATE E URBANIZZATE
LEGENDA

scala 1:5.000



Progettazione

arch. Massimo Fadel

Collaboratori

dott. pianif. Gianluca Ramo





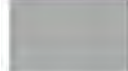
Aspetti specialistici

DATA
Ottobre 2015

rev. data ordine degli architetto
e conservatori della
provincia di udine
fadel massimo
albo sez. A/a - numero 1067
architetto

controll.
archivio

AREE EDIFICATE E URBANIZZATE:

-  Aree urbanizzate
-  Aree edificate
-  Insediamenti a carattere industriale
-  Acqua
-  Viabilita